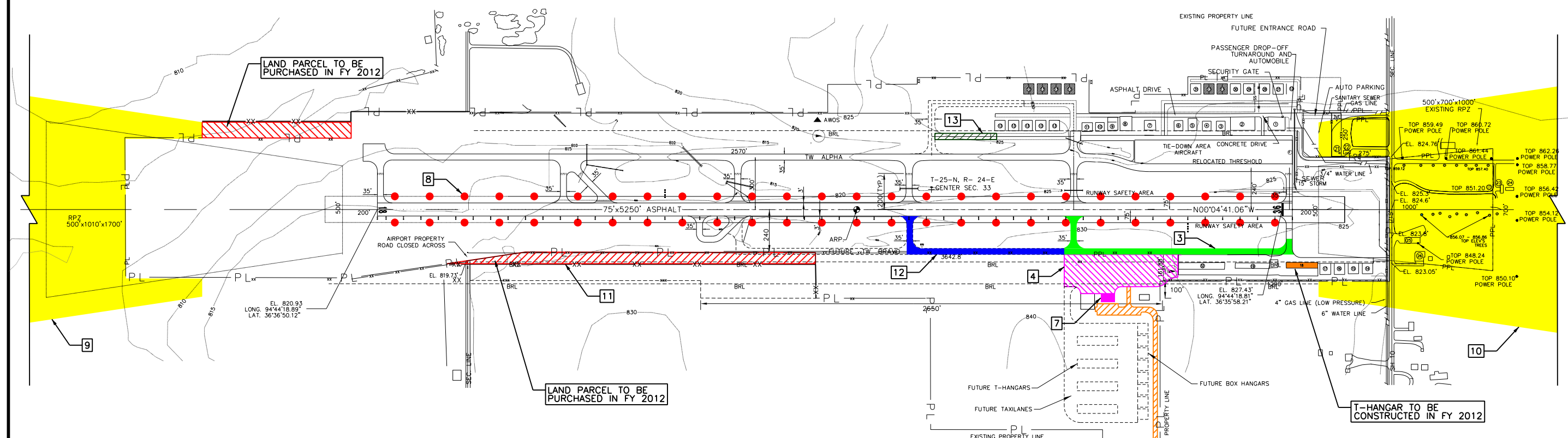
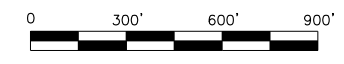




GROVE INDUSTRIAL PARK



LEGEND

	3a.	DESIGN - PARALLEL TW BRAVO - PHASE 1	\$118,000
	3b.	CONSTRUCT - PARALLEL TW BRAVO - PHASE 1	\$1,158,000
	4a.	DESIGN - WEST APRON (185' x 650')	\$89,000
	4b.	CONSTRUCT - WEST APRON (185' x 650')	\$1,271,000
	5.	WEST SIDE ACCESS/ENTRANCE ROAD, PARKING, & UTILITIES	\$1,384,000
	7.	TERMINAL BUILDING	\$1,000,000
	8.	REHABILITATE RUNWAY EDGE LIGHTS	\$470,000
	9.	ACQUIRE AVIGATION EASEMENTS FOR RUNWAY 18 (41 ACRES)	\$180,000
	10.	ACQUIRE AVIGATION EASEMENT FOR RUNWAY 36 (33 ACRES)	\$158,000
	11.	INSTALL PERIMETER FENCING AROUND NEW PROPERTY	\$158,000
	12.	PARALLEL TW BRAVO - PHASE 2	\$585,000
	13.	EXTEND EAST TAXIWAY	\$297,000

REV.	DATE	DESCRIPTION

GROVE MUNICIPAL AIRPORT
GROVE, OKLAHOMA
NPIAS UPDATE
AIP NO. 3-40-0035-XXX-2013

DEVELOPMENT
PLAN FOR FFY 2013
NPIAS YEARS 0-5

JOB NO.:
DATE: MARCH 2012
DESIGNED BY: CRC
DRAWN BY: CRC

BAR IS ONE INCH ON ORIGINAL DRAWING
0" = 1" IF NOT ONE INCH ON THIS SHEET, ADJUST SCALES ACCORDINGLY.

DRAWING NUMBER

SHEET NUMBER **1**